



## Service Operation Vessel

### Windfarm maintenance

#### Main particulars

Length Overall	83.00 m
Breadth	19.40 m
Depth moulded	7.00 m
Draught summer	5.00 m
Accommodation	90 persons



**INNOVATIVE  
SHIPOWNERS**





SERVICE OPERATION VESSEL

**1 WALK TO WORK GANGWAY**

Motion compensated gangway designed for operation with 2.5 m Hs waves.



3

**INTEGRATED DAUGHTER CRAFT**

One fast speed windfarm daughter craft



4

**MOTION COMPENSATED CRANE**

Capacity of 1 t at 23 m up to 1.5 m Hs waves



2

**ACCOMMODATION**

Up to 65 windfarm technicians

**CLASS & FLAG**

Bureau Veritas  
Unrestricted navigation,  
COMF-NOISE 2 / COMF-VIB 2,  
CLEANSHIP, GREEN PASSPORT  
Battery System

FLAG: French RIF with SPS 2008  
- 90 persons On Board certificate

**MANOEUVRING & PROPULSION SYSTEM**

Diesel electric propulsion  
Propulsion: 2 Azimuth thrusters  
Bow tunnel thrusters  
1 fore retractable azimuth thruster

**ELECTRIC PRODUCTION**

4 Gensets  
Emergency genset

**SPEED & ENDURANCE**

Maximum Speed: 12.5 knots  
Eco Speed : 10 knots

**DYNAMIC POSITIONING**

Classification DP11  
Performance in worst single failure case: Station keeping all heading with 20 m/s wind, 3 m Hs waves and 2 kts current

ERN 99.99.99.99

1

**WALK TO WORK GANGWAY**

Full electric compensated gangway with remote control designed for operation up to 2.5 m Hs waves  
Length: 20 m, +/- 5.0 m  
Telescopic pedestal range: 19 m to 24 m above sea water level

2

**ACCOMMODATION**

For 90 persons

Other spaces:

- Mess room
- Hospital
- Client offices
- Cinema / auditorium / conference room
- Briefing room for technicians
- Ship conference room
- Ship office
- Gymnasium and video game room

3

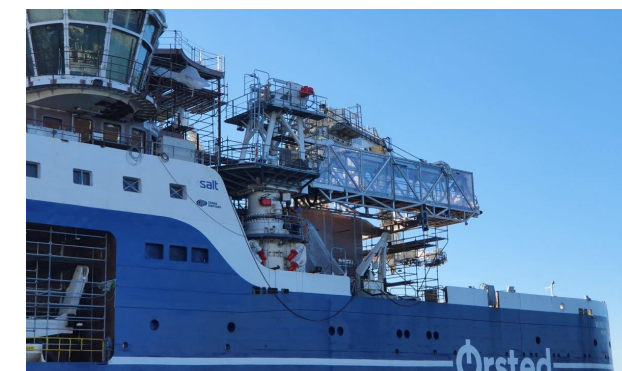
**DAUGHTER CRAFT**

One fast speed windfarm daughter craft  
Complement: 8 Technicians  
Cargo capacity: 1 t  
Twin diesel engines  
Single point lifting system

4

**CRANE**

Heave compensated crane designed for operation up to 2.5 m Hs waves

**CARGO LIFT**

One cargo lift to serve warehouse, weather deck and gangway access levels

**COMMUNICATION SYSTEMS**

VSAT / 4G / TV Sat system

**WORKING DECKS**

Open working deck surface: 500 m<sup>2</sup>  
Wood covered  
Helideck

**MISCELLANEOUS**

Very low noise and vibration levels COMF-NOISE 2 / COMF-VIB 2 notation

Anti rolling system:  
2 x passive roll tanks

