



# MULTI PURPOSE VESSEL

WIND OF PRIDE



Length O.A. 80.50 m  
Length 70.20 m  
Breadth 18.00 m  
Depth 7.40 m  
Draught (Load) 6.10 m  
Accommodation Capacity 60 pers

# Multi Purpose Vessel

## CLASS & FLAG

Builder / Year	Wuhu China / 2006
Flag	French / RIF
Class	BV
Class notation	✠ Hull ✠ Mach - OSV (Supply) Unrestricted navigation - ✠ AUT-UMS DYNAPDS AM / AT R

## MAIN PARTICULARS

Gross tonnage	3,406
Deadweight (summer)	3,426 tonnes
Length OA	80.50 m
Breadth mld.	18.00 m
Draught (summer)	6.10 m
Service speed	abt. 10-12 knots

## MANOEUVRING & PROPULSION SYSTEM

Forward tunnels	2 x 610 kW
Aft tunnels	2 x 610 kW
DP	DP2 Kongsberg Simrad SDP21
Reference Systems	2 x Independent DGPS Fanbeam HiPAP, Tautwire
Subsea Positioning	Bow "A" Frame + 1000m wire for transponder deployment

## POWER GENERATION

Main Engine	2 x 2,350 kW @750 rpm - MAK 8426 driving 1,600 kW alternator and CP propeller
Shaft alternators	2 x 1,600 kW
Main alternators	2x 350 kW
Harbour/Emergency set	1 x 190 Kw
Main electric power	440 V / 3 ph / 60 Hz

## DECK SERVICES FOR ROVs, etc.

Electrical Power	1,000 kW
Compressed Air	5.6 bar

## ACCOMMODATION

Wheelhouse and accommodation fully air conditioned	
Single berth cabins	2 suites + 10 en-suite
Two berth cabins	24 en-suite
Hospital	1 berth
Complement	60 persons

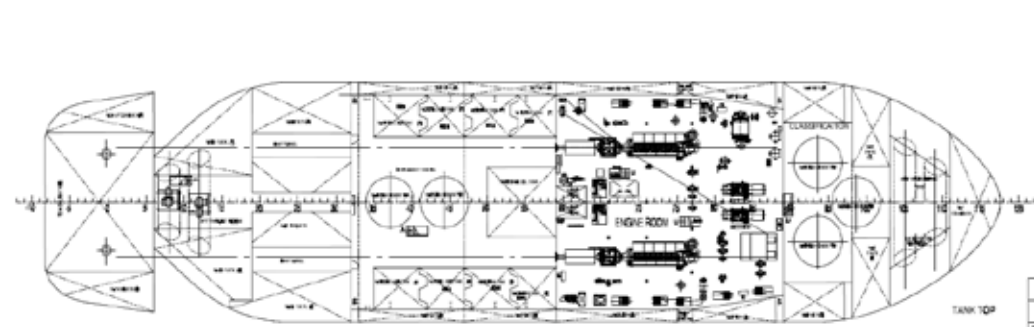
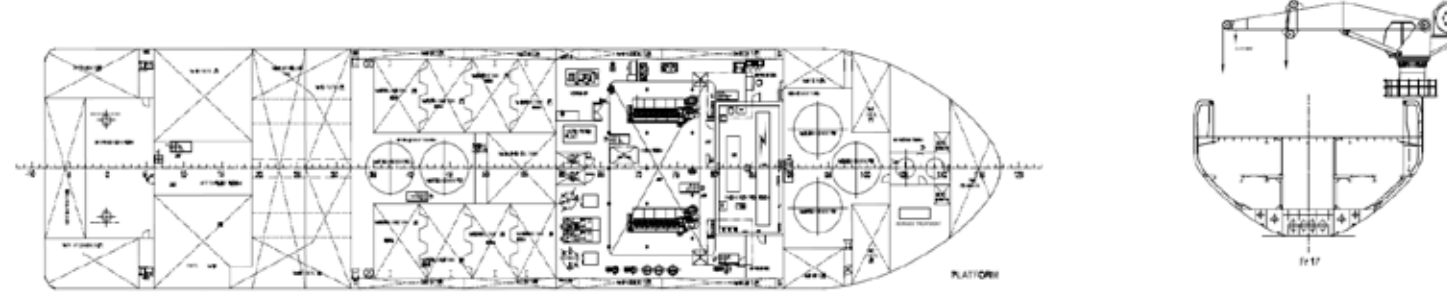
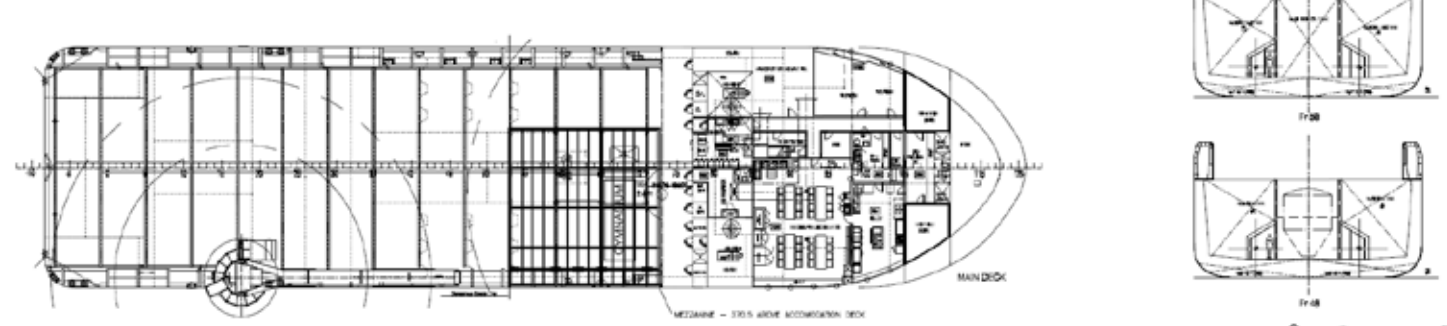
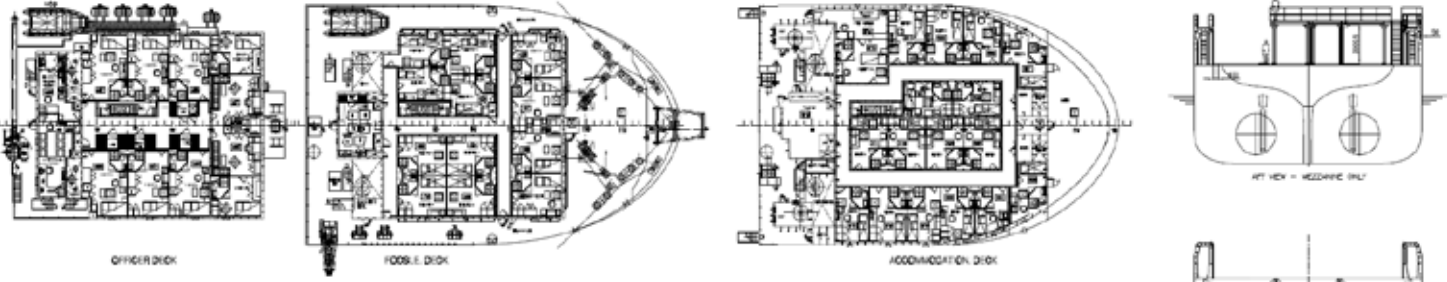
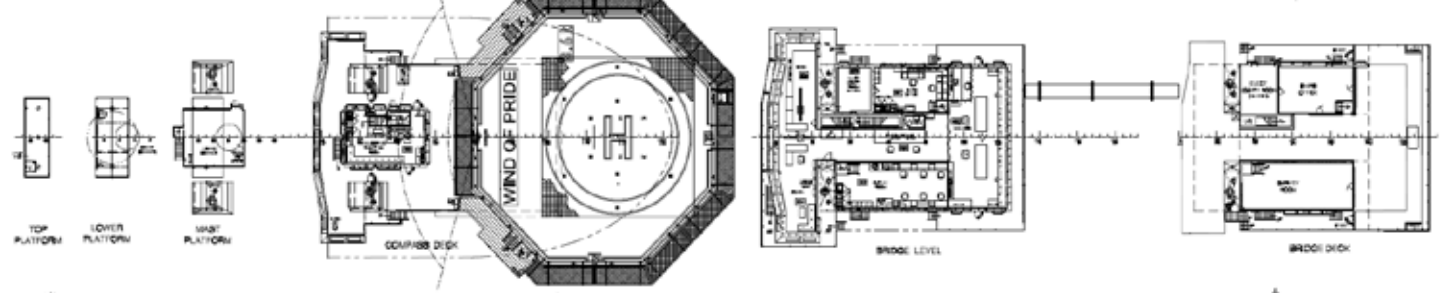
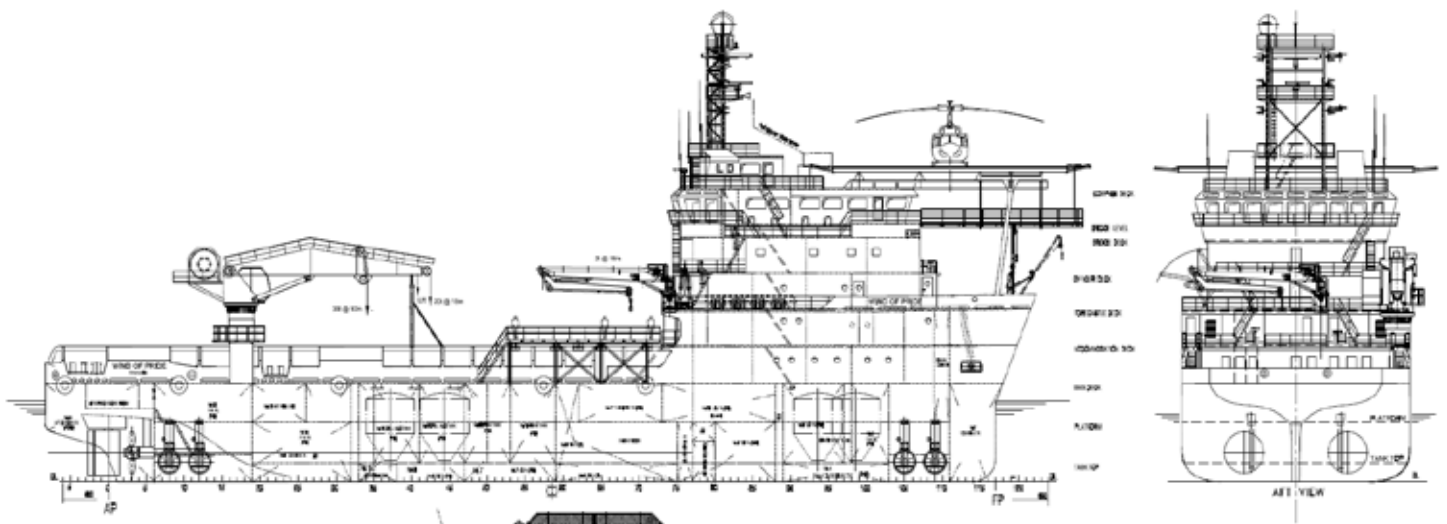
## CARGO EQUIPMENT

Clear sheathed deck area	48.0 m x 15.0 m = 720 m <sup>2</sup>
Deck strength	5 tonnes / m <sup>2</sup>
Deck load	1,200 tonnes
Mezzanine ROV deck	12 x 12 m
Helideck	D value of 18.7m and max gross weight of 8.6mt
Heli-reception room and full emergency equipment	
Offshore crane (Stiff Boom)	35 tonnes @ 10m radius
Service crane	20 tonnes @ 15m radius
knuckleboom type with 2t winch.	1 tonne @ 16m radius
Windlasses	2 tonnes @ 10m radius
Tuggers	2 x 15t hyd.
Capstans	2 x 12t hyd. 2 x 10t hyd.

## CAPACITIES

Fuel oil cargo	1,000 m <sup>3</sup>
Potable water	933 m <sup>3</sup>
Drill water	900 m <sup>3</sup>
Dry bulk	5 x 42.5 m <sup>3</sup>
Liquid mud	399 m <sup>3</sup>
Brine	367 m <sup>3</sup>
Base oil	170 m <sup>3</sup>

Two passive roll reduction stabilisation tanks



PRINCIPAL DIMENSIONS	
LENGTH O.A.	80.5m
LENGTH B.P.	70.2m
BREADTH MLD.	18.0m
DEPTH MLD.	7.4m
DRAUGHT (DESIGN)	5.2m
DRAUGHT (LOAD)	6.1m

Classification Society:  
 BV - HULL - MACH - Supply Vessel Unrestricted Navigation  
 AUT-UMS

B	07/09/2020	Mezzanine Added	PLI	VGI
A	03/12/2019	Issued for Revision	PLI	VGI
Rev.	Issue date	Reason For Issue	Prepared by	Reviewed by
		Lead Drafting Engineers Engineering Department 6100 Summers Drive Houston, TX 77036	Title: <b>WIND OF PRIDE</b> <b>GENERAL ARRANGEMENT</b>	
Reference:	WOP.DWG.001	type drawing:	GA	Revision: B



Headquarters  
21 Quai Gallieni  
92158 Suresnes Cedex  
France

T. +33 1 7038 6000  
info\_marine@lda.fr  
WWW.LDA.FR

